



Ambica[®]



A Trusted Name In Food Process Machines & Equipments

**Manufacturer , Suppliers , Exporters
Wholesalers**

Ambica Engineering Equipment Private Limited



Call : +91-8050603333

Email : ambicabglr@gmail.com

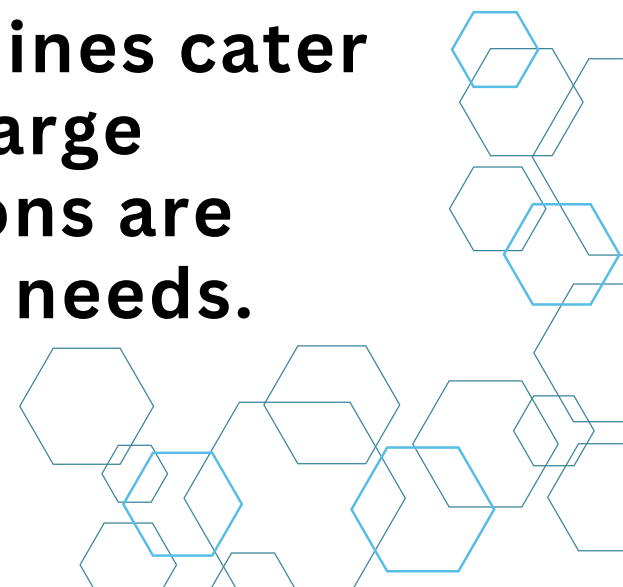
**Address : No. 17, 3rd Main, Manivilas Garden, Basveshwara
Nagar, Kamala Nagar , Bengaluru - 560079, Karnataka, India**



We offer advanced Milk Khoya (Mava) Machines and Multipurpose Use Machines designed for efficiency and consistent quality. Engineered for the food processing industry, these machines simplify Khoya production with minimal labor, ensuring rich, creamy results perfect for sweets and desserts.

Our machines are built with precision to handle high milk volumes, transforming it into premium Khoya while maintaining taste and authenticity. With energy-efficient technology, they are durable, easy to use, and significantly reduce production time.

Designed to meet industry hygiene and performance standards, these machines cater to both small-scale producers and large manufacturers. Customization options are available to suit diverse production needs.



MILK MAWA (KHOVA) MACHINE (ONLY GAS)

www.ambicamachine.com

110 SS G



DESCRIPTION	110 LTR
DIMENSION(WXLXH)	32"X50"X40"
VESSEL VOLUME	110 LTR
MAIN MOTOR (OPTIONAL 3PHASE)	1.0 HP
BLOWER MOTOR (OPTIONAL 3PHASE)	0.25 HP
WEIGHT(APPROX)	
DG	220
G	210

DESCRIPTION	110 LTR
POWER CONSUMPTION / PER HOUR	1.0 UNIT
FUEL CON.S PER BATCH (APPROX)	
DIESEL / Kerosine	1.0 TO1.5 LTR
GAS	1.0 TO 1.5 KG
PRODUCTION CAPACITY PER BATCH	
MILK IN MAVA (KHOVA)	10 LTR
MILK IN BASUNDI	30 LTR
MILK IN BOIL	60 LTR

HEAD OFFICE Industrial Plot No.6, Mahuva Road, **Talaja-364140**, Dist : Bhavnagar, Gujarat - India. +91 **2842 222 141** | +91 **97234 07151**
info@ambicaeng.com | sales@ambicaeng.com

BRANCH OFFICE Shed No.5, Gajanand Industrial Hub-3, Nr. Hathiajn Circle, Opp. Siddhpura Estate, Phase-IV, Vatva GIDC, **Ahmedabad-382445**, Gujarat - India. +91 **94264 40989**

Ambica[®]
SINCE - 1974

AMBICA ENGINEERING WORKS

MANUFACTURER & EXPORTER OF FOOD PROCESSING MACHINERY & KITCHEN EQUIPMENTS

MILK MAWA (KHOVA) MACHINE (ONLY GAS)

www.ambicamachine.com

200 SS G



DESCRIPTION	200 LTR
DIMENSION(WXLXH)	39"X55"X46"(G)
VESSEL VOLUME	200 LTR
MAIN MOTOR (OPTIONAL 3PHASE)	1.5 HP
BLOWER MOTOR (OPTIONAL 3PHASE)	0.5 HP
WEIGHT(APPROX)	
DG	310
G	260

DESCRIPTION	200 LTR
POWER CONSUMPTION / PER HOUR	1.5 UNIT
FUEL CON.S PER BATCH (APPROX)	
DIESEL / KEROSINE	2.5 TO 3.0 LTR
GAS	2.0 TO 2.5 KG
PRODUCTION CAPACITY PER BATCH	
MILK IN MAVA (KHOVA)	20 LTR
MILK IN BASUNDI	60 LTR
MILK IN BOIL	120 LTR

HEAD OFFICE Industrial Plot No.6, Mahuva Road, **Talaja-364140**, Dist : Bhavnagar, Gujarat - India. +91 **2842 222 141** | +91 **97234 07151**
info@ambicaeng.com | sales@ambicaeng.com

BRANCH OFFICE Shed No.5, Gajanand Industrial Hub-3, Nr. Hathiajn Circle, Opp. Siddhpura Estate, Phase-IV, Vatva GIDC, **Ahmedabad-382445**, Gujarat - India. +91 **94264 40989**

Ambica[®]
SINCE - 1974

AMBICA ENGINEERING WORKS

MANUFACTURER & EXPORTER OF FOOD PROCESSING MACHINERY & KITCHEN EQUIPMENTS

MILK MAWA (KHOVA) MACHINE (DIESEL - GAS)

www.ambicamachine.com

55 SS DG



DESCRIPTION	55 LTR
DIMENSION (WXLXH)	26"X45"X32"
VESSEL VOLUME	55 LTR
MAIN MOTOR (OPTIONAL 3PHASE)	0.5 HP
BLOWER MOTOR (OPTIONAL 3PHASE)	0.25 HP
WEIGHT (APPROX)	
DG	150
G	140

DESCRIPTION	55 LTR
POWER CONSUMPTION / PER HOUR	0.5 UNIT
FUEL CON.S PER BATCH (APPROX)	
DIESEL / Kerosine	0.75 TO 1.0 LTR
GAS	0.75 TO 1.0 KG
PRODUCTION CAPACITY PER BATCH	
MILK IN MAVa (KHOVA)	5 LTR
MILK IN BASUNDI	15 LTR
MILK IN BOIL	30 LTR

HEAD OFFICE Industrial Plot No.6, Mahuva Road, **Talaja-364140**, Dist : Bhavnagar, Gujarat - India. +91 **2842 222 141** | +91 **97234 07151**
info@ambicaeng.com | sales@ambicaeng.com

BRANCH OFFICE Shed No.5, Gajanand Industrial Hub-3, Nr. Hathiajn Circle, Opp. Siddhpura Estate, Phase-IV, Vatva GIDC, **Ahmedabad-382445**, Gujarat - India. +91 **94264 40989**

Ambica[®]
SINCE - 1974

AMBICA ENGINEERING WORKS

MANUFACTURER & EXPORTER OF FOOD PROCESSING MACHINERY & KITCHEN EQUIPMENTS

MILK MAWA (KHOVA) MACHINE (DIESEL - GAS)

www.ambicamachine.com

110 SS DG



DESCRIPTION	110 LTR
DIMENSION(WXLXH)	32"X50"X40"
VESSEL VOLUME	110 LTR
MAIN MOTOR (OPTIONAL 3PHASE)	1.0 HP
BLOWER MOTOR (OPTIONAL 3PHASE)	0.25 HP
WEIGHT(APPROX)	
DG	220
G	210

DESCRIPTION	110 LTR
POWER CONSUMPTION / PER HOUR	1.0 UNIT
FUEL CON.S PER BATCH (APPROX)	
DIESEL / Kerosine	1.0 TO1.5 LTR
GAS	1.0 TO 1.5 KG
PRODUCTION CAPACITY PER BATCH	
MILK IN MAVa (KHOVA)	10 LTR
MILK IN BASUNDI	30 LTR
MILK IN BOIL	60 LTR

HEAD OFFICE Industrial Plot No.6, Mahuva Road, **Talaja-364140**, Dist : Bhavnagar, Gujarat - India. +91 **2842 222 141** | +91 **97234 07151**
info@ambicaeng.com | sales@ambicaeng.com

BRANCH OFFICE Shed No.5, Gajanand Industrial Hub-3, Nr. Hathiajn Circle, Opp. Siddhpura Estate, Phase-IV, Vatva GIDC, **Ahmedabad-382445**, Gujarat - India. +91 **94264 40989**

Ambica[®]
SINCE - 1974

AMBICA ENGINEERING WORKS

MANUFACTURER & EXPORTER OF FOOD PROCESSING MACHINERY & KITCHEN EQUIPMENTS

MILK MAWA (KHOVA) MACHINE (DIESEL - GAS)

www.ambicamachine.com

200 SS DG



DESCRIPTION	200 LTR
DIMENSION(WXLXH)	239"X68"X46"(DG)
VESSEL VOLUME	200 LTR
MAIN MOTOR (OPTIONAL 3PHASE)	1.5 HP
BLOWER MOTOR (OPTIONAL 3PHASE)	0.5 HP
WEIGHT(APPROX)	
DG	310
G	260

DESCRIPTION	200 LTR
POWER CONSUMPTION / PER HOUR	1.5 UNIT
FUEL CON.S PER BATCH (APPROX)	
DIESEL / KEROSINE	2.5 TO 3.0 LTR
GAS	2.0 TO 2.5 KG
PRODUCTION CAPACITY PER BATCH	
MILK IN MAVA (KHOVA)	20 LTR
MILK IN BASUNDI	60 LTR
MILK IN BOIL	120 LTR

HEAD OFFICE Industrial Plot No.6, Mahuva Road, **Talaja-364140**, Dist : Bhavnagar, Gujarat - India. +91 **2842 222 141** | +91 **97234 07151**
info@ambicaeng.com | sales@ambicaeng.com

BRANCH OFFICE Shed No.5, Gajanand Industrial Hub-3, Nr. Hathiajn Circle, Opp. Siddhpura Estate, Phase-IV, Vatva GIDC, **Ahmedabad-382445**, Gujarat - India. +91 **94264 40989**

Ambica[®]
SINCE - 1974

AMBICA ENGINEERING WORKS

MANUFACTURER & EXPORTER OF FOOD PROCESSING MACHINERY & KITCHEN EQUIPMENTS

MILK / BASUNDI BOILING MACHINE (ONLY GAS)

www.ambicamachine.com

300 SS G



DESCRIPTION	300 LTR
DIMENSION(WXLXH)	44" X 56" X 50"(G)
VESSEL VOLUME	300 LTR
MAIN MOTOR(OPTIONAL 3PHASE)	1.5 HP
BLOWER MOTOR (OPTIONAL 3PHASE)	0.5 HP
WEIGHT(APPROX) GAS	275 KG
POWER CONSUMPTION/PER HOUR	1.25 UNIT
PRODUCTION CAPACITY PER BATCH	200 LTR

HEAD OFFICE Industrial Plot No.6, Mahuva Road, **Talaja-364140**, Dist : Bhavnagar, Gujarat - India. +91 **2842 222 141** | +91 **97234 07151**
info@ambicaeng.com | sales@ambicaeng.com

BRANCH OFFICE Shed No.5, Gajanand Industrial Hub-3, Nr. Hathiajn Circle, Opp. Siddhpura Estate, Phase-IV, Vatva GIDC, **Ahmedabad-382445**, Gujarat - India. +91 **94264 40989**

Ambica[®]
SINCE - 1974

AMBICA ENGINEERING WORKS

MANUFACTURER & EXPORTER OF FOOD PROCESSING MACHINERY & KITCHEN EQUIPMENTS

MILK / BASUNDI BOILING MACHINE (ONLY GAS)

www.ambicamachine.com

400 SS G



DESCRIPTION	400 LTR
DIMENSION(WXLXH)	49"X66"X54"(G)
VESSEL VOLUME	450 LTR
MAIN MOTOR(OPTIONAL 3PHASE)	2.0 HP
BLOWER MOTOR (OPTIONAL 3PHASE)	1.0 HP
WEIGHT(APPROX) GAS	425 KG
POWER CONSUMPTION/PER HOUR	1.5 UNIT
PRODUCTION CAPACITY PER BATCH	300 LTR

HEAD OFFICE Industrial Plot No.6, Mahuva Road, **Talaja-364140**, Dist : Bhavnagar, Gujarat - India. +91 **2842 222 141** | +91 **97234 07151**
info@ambicaeng.com | sales@ambicaeng.com

BRANCH OFFICE Shed No.5, Gajanand Industrial Hub-3, Nr. Hathiajn Circle, Opp. Siddhpura Estate, Phase-IV, Vatva GIDC, **Ahmedabad-382445**, Gujarat - India. +91 **94264 40989**

Ambica[®]
SINCE - 1974

AMBICA ENGINEERING WORKS

MANUFACTURER & EXPORTER OF FOOD PROCESSING MACHINERY & KITCHEN EQUIPMENTS

MILK / BASUNDI BOILING MACHINE (ONLY GAS)

www.ambicamachine.com

600 SS G



DESCRIPTION	600 LTR
DIMENSION(WXLXH)	53"X66"X58"(G)
VESSEL VOLUME	600 LTR
MAIN MOTOR(OPTIONAL 3PHASE)	2.0 HP
BLOWER MOTOR (OPTIONAL 3PHASE)	1.0 HP
WEIGHT(APPROX) GAS	430 KG
POWER CONSUMPTION/PER HOUR	1.5 UNIT
PRODUCTION CAPACITY PER BATCH	450 LTR

HEAD OFFICE Industrial Plot No.6, Mahuva Road, **Talaja-364140**, Dist : Bhavnagar, Gujarat - India. +91 **2842 222 141** | +91 **97234 07151**
info@ambicaeng.com | sales@ambicaeng.com

BRANCH OFFICE Shed No.5, Gajanand Industrial Hub-3, Nr. Hathiajn Circle, Opp. Siddhpura Estate, Phase-IV, Vatva GIDC, **Ahmedabad-382445**, Gujarat - India. +91 **94264 40989**

Ambica[®]
SINCE - 1974

AMBICA ENGINEERING WORKS

MANUFACTURER & EXPORTER OF FOOD PROCESSING MACHINERY & KITCHEN EQUIPMENTS

MILK / BASUNDI BOILING MACHINE (DIESEL - GAS)

www.ambicamachine.com

300 SS DG



DESCRIPTION	300 LTR
DIMENSION(WXLXH)	44"X68"X50"(DG)
VESSEL VOLUME	300 LTR
MAIN MOTOR(OPTIONAL 3PHASE)	1.5 HP
BLOWER MOTOR (OPTIONAL 3PHASE)	0.5 HP
WEIGHT(APPROX) DIESEL/GAS	330 KG
POWER CONSUMPTION/PER HOUR	1.25 UNIT
PRODUCTION CAPACITY PER BATCH	200 LTR

HEAD OFFICE Industrial Plot No.6, Mahuva Road, **Talaja-364140**, Dist : Bhavnagar, Gujarat - India. +91 **2842 222 141** | +91 **97234 07151**
info@ambicaeng.com | sales@ambicaeng.com

BRANCH OFFICE Shed No.5, Gajanand Industrial Hub-3, Nr. Hathiajn Circle, Opp. Siddhpura Estate, Phase-IV, Vatva GIDC, **Ahmedabad-382445**, Gujarat - India. +91 **94264 40989**

Ambica[®]
SINCE - 1974

AMBICA ENGINEERING WORKS

MANUFACTURER & EXPORTER OF FOOD PROCESSING MACHINERY & KITCHEN EQUIPMENTS

MILK / BASUNDI BOILING MACHINE (DIESEL - GAS)

www.ambicamachine.com

400 SS DG



DESCRIPTION	400 LTR
DIMENSION(WXLXH)	49"X82"X54"(DG)
VESSEL VOLUME	450 LTR
MAIN MOTOR(OPTIONAL 3PHASE)	2.0 HP
BLOWER MOTOR (OPTIONAL 3PHASE)	1.0 HP
WEIGHT(APPROX) DIESEL/GAS	495 KG
POWER CONSUMPTION/PER HOUR	1.5 UNIT
PRODUCTION CAPACITY PER BATCH	300 LTR

HEAD OFFICE Industrial Plot No.6, Mahuva Road, **Talaja-364140**, Dist : Bhavnagar, Gujarat - India. +91 **2842 222 141** | +91 **97234 07151**
info@ambicaeng.com | sales@ambicaeng.com

BRANCH OFFICE Shed No.5, Gajanand Industrial Hub-3, Nr. Hathiajn Circle, Opp. Siddhpura Estate, Phase-IV, Vatva GIDC, **Ahmedabad-382445**, Gujarat - India. +91 **94264 40989**

Ambica[®]
SINCE - 1974

AMBICA ENGINEERING WORKS

MANUFACTURER & EXPORTER OF FOOD PROCESSING MACHINERY & KITCHEN EQUIPMENTS

MILK / BASUNDI BOILING MACHINE (DIESEL - GAS)

www.ambicamachine.com

600 SS DG



DESCRIPTION	600 LTR
DIMENSION(WXLXH)	53"X82"X58"(DG)
VESSEL VOLUME	600 LTR
MAIN MOTOR(OPTIONAL 3PHASE)	2.0 HP
BLOWER MOTOR (OPTIONAL 3PHASE)	1.0 HP
WEIGHT(APPROX) DIESEL/GAS	500 KG
POWER CONSUMPTION/PER HOUR	1.5 UNIT
PRODUCTION CAPACITY PER BATCH	450 LTR

HEAD OFFICE Industrial Plot No.6, Mahuva Road, **Talaja-364140**, Dist : Bhavnagar, Gujarat - India. +91 **2842 222 141** | +91 **97234 07151**
info@ambicaeng.com | sales@ambicaeng.com

BRANCH OFFICE Shed No.5, Gajanand Industrial Hub-3, Nr. Hathiajn Circle, Opp. Siddhpura Estate, Phase-IV, Vatva GIDC, **Ahmedabad-382445**, Gujarat - India. +91 **94264 40989**

Ambica[®]
SINCE - 1974

AMBICA ENGINEERING WORKS

MANUFACTURER & EXPORTER OF FOOD PROCESSING MACHINERY & KITCHEN EQUIPMENTS

NAMKEEN MACHINE (JALI SIZE 7")

www.ambicamachine.com



DESCRIPTION	7" NAMKEEN
DIMENSION(WXLXH)	36" x 8" x 24"
BODY	SS 304
CAPACITY PER HOUR	30 TO 40 KG
WEIGHT	60 KG
MOTOR(OPTIONAL 3 PH)	0.5 HP
POWER CONSUMPTION (PER HOUR)	0.5 UNIT

HEAD OFFICE Industrial Plot No.6, Mahuva Road, **Talaja-364140**, Dist : Bhavnagar, Gujarat - India. +91 **2842 222 141** | +91 **97234 07151**
info@ambicaeng.com | sales@ambicaeng.com

BRANCH OFFICE Shed No.5, Gajanand Industrial Hub-3, Nr. Hathiajn Circle, Opp. Siddhpura Estate, Phase-IV, Vatva GIDC, **Ahmedabad-382445**, Gujarat - India. +91 **94264 40989**

Ambica[®]
SINCE - 1974

AMBICA ENGINEERING WORKS

MANUFACTURER & EXPORTER OF FOOD PROCESSING MACHINERY & KITCHEN EQUIPMENTS

NAMKEEN MACHINE (JALI SIZE 9")

www.ambicamachine.com



DESCRIPTION	9" NAMKEEN
DIMENSION(WXLXH)	48" X 10" X 24"
BODY	SS 304
CAPACITY PER HOUR	60 TO 70 KG
WEIGHT	80 KG
MOTOR(OPTIONAL 3 PH)	1.0 HP
POWER CONSUMPTION (PER HOUR)	1.0 UNIT

HEAD OFFICE Industrial Plot No.6, Mahuva Road, **Talaja-364140**, Dist : Bhavnagar, Gujarat - India. +91 **2842 222 141** | +91 **97234 07151**
info@ambicaeng.com | sales@ambicaeng.com

BRANCH OFFICE Shed No.5, Gajanand Industrial Hub-3, Nr. Hathiajn Circle, Opp. Siddhpura Estate, Phase-IV, Vatva GIDC, **Ahmedabad-382445**, Gujarat - India. +91 **94264 40989**

Ambica[®]
SINCE - 1974

AMBICA ENGINEERING WORKS

MANUFACTURER & EXPORTER OF FOOD PROCESSING MACHINERY & KITCHEN EQUIPMENTS

DRYER MACHINE

www.ambicamachine.com



DESCRIPTION	5 KG DRYER
DIMENSION (W X L X H)	30" x 20"
BODY	SS 304
DRUM (JAR)	SS & DETACHABLE

DESCRIPTION	5 KG DRYER
CAPACITY	
FRIED ITEMS	5 KG
WET ITEMS	10 KG
WEIGHT	80 KG
MOTOR (OPTIONAL 3 PH)	0.5 HP
POWER CONSUMPTION	0.5 UNIT

HEAD OFFICE Industrial Plot No.6, Mahuva Road, **Talaja-364140**, Dist : Bhavnagar, Gujarat - India. +91 **2842 222 141** | +91 **97234 07151**
info@ambicaeng.com | sales@ambicaeng.com

BRANCH OFFICE Shed No.5, Gajanand Industrial Hub-3, Nr. Hathiajn Circle, Opp. Siddhpura Estate, Phase-IV, Vatva GIDC, **Ahmedabad-382445**, Gujarat - India. +91 **94264 40989**

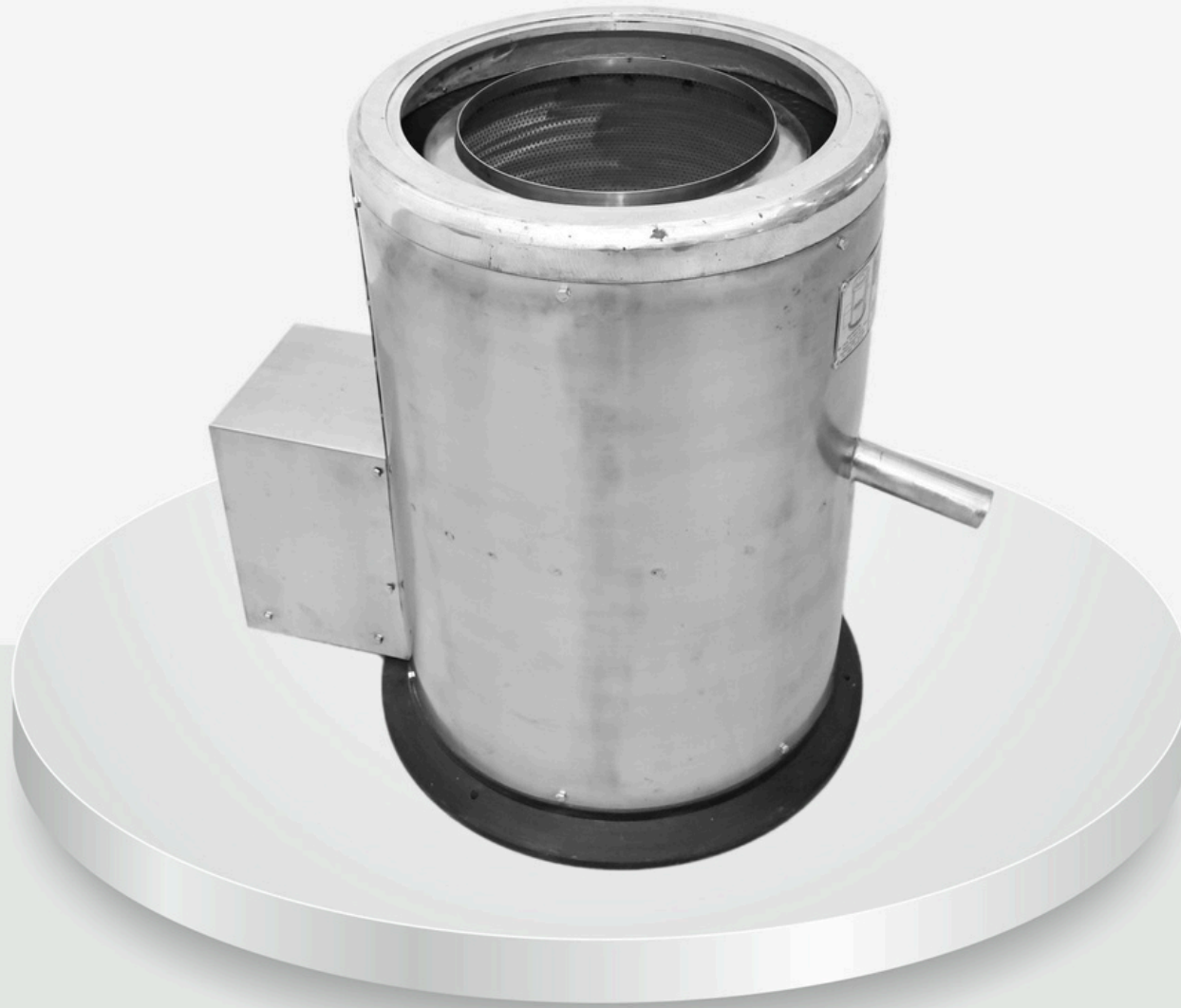
Ambica[®]
SINCE - 1974

AMBICA ENGINEERING WORKS

MANUFACTURER & EXPORTER OF FOOD PROCESSING MACHINERY & KITCHEN EQUIPMENTS

DRYER MACHINE

www.ambicamachine.com



DESCRIPTION	10 KG DRYER
DIMENSION (W X L X H)	34" x 25"
BODY	SS 304
DRUM (JAR)	SS & DETACHABLE

DESCRIPTION	10 KG DRYER
CAPACITY	
FRIED ITEMS	10 KG
WET ITEMS	20 KG
WEIGHT	100 KG
MOTOR (OPTIONAL 3 PH)	1.0 HP
POWER CONSUMPTION	1.0 UNIT

HEAD OFFICE Industrial Plot No.6, Mahuva Road, **Talaja-364140**, Dist : Bhavnagar, Gujarat - India. +91 **2842 222 141** | +91 **97234 07151**
info@ambicaeng.com | sales@ambicaeng.com

BRANCH OFFICE Shed No.5, Gajanand Industrial Hub-3, Nr. Hathiajn Circle, Opp. Siddhpura Estate, Phase-IV, Vatva GIDC, **Ahmedabad-382445**, Gujarat - India. +91 **94264 40989**

Ambica[®]
SINCE - 1974

AMBICA ENGINEERING WORKS

MANUFACTURER & EXPORTER OF FOOD PROCESSING MACHINERY & KITCHEN EQUIPMENTS

SINGLE BURNER PORTABLE PLANT

DIESEL / KEROSENE / GAS
BHATTHI MACHINE



UNIT NO. : 5

DESCRIPTION	UNIT NO. : 5
DIMENSION (W x L x H1 x H2)	13" x 51" x 15" x 27"
BURNER RING (KANTHO)	16"
BURNER SIZE	12"
FUEL TANK CAPACITY	22 LTR.
WEIGHT (APPROX.)	65 KG.
FUEL CONSUMPTION/HR, (APPROX.)	1.0 - 3.0 LTR.
POWER CONSUMPTION / 6 HR.	1.0 UNIT
MOTOR	0.25 HP

HEAD OFFICE Industrial Plot No.6, Mahuva Road, **Talaja-364140**, Dist : Bhavnagar, Gujarat - India. +91 2842 222 141 | +91 97234 07151
info@ambicaeng.com | sales@ambicaeng.com

BRANCH OFFICE Shed No.5, Gajanand Industrial Hub-3, Nr. Hathiajn Circle, Opp. Siddhpura Estate, Phase-IV, Vatva GIDC, **Ahmedabad-382445**, Gujarat - India. +91 94264 40989

Ambica[®]
SINCE - 1974

AMBICA ENGINEERING WORKS

SINGLE BURNER PORTABLE PLANT

DIESEL / KEROSENE / GAS
BHATTHI MACHINE

UNIT NO. : 5A

DESCRIPTION	UNIT NO. : 5A
DIMENSION (W x L x H1 x H2)	17" x 66" x 17" x 30"
BURNER RING (KANTHO)	19"
BURNER SIZE	14"
FUEL TANK CAPACITY	35 LTR.
WEIGHT (APPROX.)	85 KG.
FUEL CONSUMPTION/HR, (APPROX.)	1.0-4.0 LTR.
POWER CONSUMPTION / 6 HR.	2.5 UNIT
MOTOR	0.50 HP



HEAD OFFICE Industrial Plot No.6, Mahuva Road, **Talaja-364140**, Dist : Bhavnagar, Gujarat - India. +91 **2842 222 141** | +91 **97234 07151**
info@ambicaeng.com | sales@ambicaeng.com

BRANCH OFFICE Shed No.5, Gajanand Industrial Hub-3, Nr. Hathiajn Circle, Opp. Siddhpura Estate, Phase-IV, Vatva GIDC, **Ahmedabad-382445**, Gujarat - India. +91 **94264 40989**

Ambica[®]
SINCE - 1974

AMBICA ENGINEERING WORKS

SINGLE BURNER PORTABLE PLANT

DIESEL / KEROSENE / GAS
BHATTHI MACHINE



UNIT NO. : 6

DESCRIPTION	UNIT NO. : 6
DIMENSION (W x L x H1 x H2)	13" x 48" x 13" x 27"
BURNER RING (KANTHO)	13"
BURNER SIZE	10"
FUEL TANK CAPACITY	22 LTR.
WEIGHT (APPROX.)	50 KG.
FUEL CONSUMPTION/HR, (APPROX.)	1.0-3.0 LTR.
POWER CONSUMPTION / 6 HR.	1.0 UNIT
MOTOR	0.25 HP

HEAD OFFICE Industrial Plot No.6, Mahuva Road, **Talaja-364140**, Dist : Bhavnagar, Gujarat - India. +91 2842 222 141 | +91 97234 07151
info@ambicaeng.com | sales@ambicaeng.com

BRANCH OFFICE Shed No.5, Gajanand Industrial Hub-3, Nr. Hathiajn Circle, Opp. Siddhpura Estate, Phase-IV, Vatva GIDC, **Ahmedabad-382445**, Gujarat - India. +91 94264 40989

Ambica[®]
SINCE - 1974

AMBICA ENGINEERING WORKS

FLOUR KNEADING MACHINE (BOWL TYPE)



DESCRIPTION	10 KG FKMC
DIMENSION (W X L X H)	36" X 22" X 36"
BODY	MS
BOWL	SS 304
CAPACITY	10 KG
WEIGHT	100 KG
MOTOR (OPTIONAL 3 PH)	1.0 HP
POWER CONSUMPTION	1.0 UNIT

HEAD OFFICE Industrial Plot No.6, Mahuva Road, **Talaja-364140**, Dist : Bhavnagar, Gujarat - India. +91 **2842 222 141** | +91 **97234 07151**
info@ambicaeng.com | sales@ambicaeng.com

BRANCH OFFICE Shed No.5, Gajanand Industrial Hub-3, Nr. Hathiajn Circle, Opp. Siddhpura Estate, Phase-IV, Vatva GIDC, **Ahmedabad-382445**, Gujarat - India. +91 **94264 40989**

Ambica[®]
SINCE - 1974

AMBICA ENGINEERING WORKS

FLOUR KNEADING MACHINE (BOWL TYPE)



DESCRIPTION	20 KG FKMC
DIMENSION (W X L X H)	40" X 24" X 42"
BODY	MS
BOWL	SS 304
CAPACITY	20 KG
WEIGHT	125 KG
MOTOR (OPTIONAL 3 PH)	1.5 HP
POWER CONSUMPTION	1.5 UNIT

HEAD OFFICE Industrial Plot No.6, Mahuva Road, **Talaja-364140**, Dist : Bhavnagar, Gujarat - India. +91 **2842 222 141** | +91 **97234 07151**
info@ambicaeng.com | sales@ambicaeng.com

BRANCH OFFICE Shed No.5, Gajanand Industrial Hub-3, Nr. Hathiajn Circle, Opp. Siddhpura Estate, Phase-IV, Vatva GIDC, **Ahmedabad-382445**, Gujarat - India. +91 **94264 40989**

Ambica[®]
SINCE - 1974

AMBICA ENGINEERING WORKS

FLOUR KNEADING MACHINE (SS TOPE TYPE)



DESCRIPTION	10 KG FKMC
DIMENSION (WXLXH)	18" x 36" x 34"
BODY	SS 304
CAPACITY	10 KG
WEIGHT	100
MOTOR (OPTIONAL 3 PH)	1.0 HP
POWER CONSUMPTION	1.0 UNIT

HEAD OFFICE Industrial Plot No.6, Mahuva Road, **Talaja-364140**, Dist : Bhavnagar, Gujarat - India. +91 **2842 222 141** | +91 **97234 07151**
info@ambicaeng.com | sales@ambicaeng.com

BRANCH OFFICE Shed No.5, Gajanand Industrial Hub-3, Nr. Hathiajn Circle, Opp. Siddhpura Estate, Phase-IV, Vatva GIDC, **Ahmedabad-382445**, Gujarat - India. +91 **94264 40989**

Ambica[®]
SINCE - 1974

AMBICA ENGINEERING WORKS

FLOUR KNEADING MACHINE (SS TOPE TYPE)



DESCRIPTION	20 KG FKMC
DIMENSION (WXLXH)	26" x 36" x 38"
BODY	SS 304
CAPACITY	20 KG
WEIGHT	120
MOTOR (OPTIONAL 3 PH)	2.0 HP
POWER CONSUMPTION	2.0 UNIT

HEAD OFFICE Industrial Plot No.6, Mahuva Road, **Talaja-364140**, Dist : Bhavnagar, Gujarat - India. +91 **2842 222 141** | +91 **97234 07151**
info@ambicaeng.com | sales@ambicaeng.com

BRANCH OFFICE Shed No.5, Gajanand Industrial Hub-3, Nr. Hathiajn Circle, Opp. Siddhpura Estate, Phase-IV, Vatva GIDC, **Ahmedabad-382445**, Gujarat - India. +91 **94264 40989**

Ambica[®]
SINCE - 1974

AMBICA ENGINEERING WORKS

SINGLE BURNER TABLE TOP PLANT

DIESEL / KEROSENE / GAS
BHATTHI MACHINE



TT-1

DESCRIPTION	TT-1
DIMENSION (W x L x H1 x H2)	20" x 20" x 27"
BURNER RING (KANTHO)	17"
BURNER SIZE	8"
FUEL TANK CAPACITY	10 LTR.

DESCRIPTION	TT-1
WEIGHT (APPROX.)	60 KG.
FUEL CONSUMPTION / HR, (APPROX.)	1.0-3.0 LTR.
POWER CONSUMPTION / 6 HR.	1.0 UNIT
MOTOR	0.25 HP

HEAD OFFICE Industrial Plot No.6, Mahuva Road, **Talaja-364140**, Dist : Bhavnagar, Gujarat - India. +91 **2842 222 141** | +91 **97234 07151**
info@ambicaeng.com | sales@ambicaeng.com

BRANCH OFFICE Shed No.5, Gajanand Industrial Hub-3, Nr. Hathiajn Circle, Opp. Siddhpura Estate, Phase-IV, Vatva GIDC, **Ahmedabad-382445**, Gujarat - India. +91 **94264 40989**

Ambica[®]
SINCE - 1974

AMBICA ENGINEERING WORKS

SINGLE BURNER TABLE TOP PLANT

DIESEL / KEROSENE / GAS
BHATTHI MACHINE



TT-1A

DESCRIPTION	TT-1A
DIMENSION (W x L x H1 x H2)	20" x 50" x 17" x 28"
BURNER RING (KANTHO)	19"
BURNER SIZE	12"
FUEL TANK CAPACITY	17 LTR.

DESCRIPTION	TT-1A
WEIGHT (APPROX.)	78 KG.
FUEL CONSUMPTION/HR, (APPROX.)	1.0-3.0 LTR.
POWER CONSUMPTION / 6 HR.	2.5 UNIT
MOTOR	0.50 HP

HEAD OFFICE Industrial Plot No.6, Mahuva Road, **Talaja-364140**, Dist : Bhavnagar, Gujarat - India. +91 2842 222 141 | +91 97234 07151
info@ambicaeng.com | sales@ambicaeng.com

BRANCH OFFICE Shed No.5, Gajanand Industrial Hub-3, Nr. Hathiajn Circle, Opp. Siddhpura Estate, Phase-IV, Vatva GIDC, **Ahmedabad-382445**, Gujarat - India. +91 94264 40989

Ambica[®]
SINCE - 1974

AMBICA ENGINEERING WORKS

DOUBLE BURNER TABLE TOP PLANT

DIESEL / KEROSENE / GAS
BHATTHI MACHINE



TT-2

DESCRIPTION	TT-2
DIMENSION (W x L x H1 x H2)	30" x 60" x 27"
BURNER RING (KANTHO)	17" & 19"
BURNER SIZE	12"
FUEL TANK CAPACITY	30 LTR.

DESCRIPTION	TT-2
WEIGHT (APPROX.)	140 KG.
FUEL CONSUMPTION/HR, (APPROX.)	1.0-3.0 LTR.
POWER CONSUMPTION / 6 HR.	2.5 UNIT
MOTOR	0.50 HP

HEAD OFFICE Industrial Plot No.6, Mahuva Road, **Talaja-364140**, Dist : Bhavnagar, Gujarat - India. +91 **2842 222 141** | +91 **97234 07151**
info@ambicaeng.com | sales@ambicaeng.com

BRANCH OFFICE Shed No.5, Gajanand Industrial Hub-3, Nr. Hathiajn Circle, Opp. Siddhpura Estate, Phase-IV, Vatva GIDC, **Ahmedabad-382445**, Gujarat - India. +91 **94264 40989**

Ambica[®]
SINCE - 1974

AMBICA ENGINEERING WORKS



Ambica[®]



A Trusted Name In Food Process Machines & Equipments

**Manufacturer , Suppliers , Exporters
Wholesalers**

**For More Query Contact Us
Ambica Engineering Equipment Private Limited**

Call : +91-8050603333

Email : ambicabglr@gmail.com

**Address : No. 17, 3rd Main, Manivilas
Garden, Basveshwara Nagar, Kamala Nagar
, Bengaluru - 560079, Karnataka, India**

Follow Us On Social Media

